

Project Workshops is a vibrant centre for the visual arts in Quarley near Andover, Hampshire. It is home to over a dozen artists who create a unique range of sculpture, furniture, ceramics, pottery, glass vessels and paintings.

Open Studios Weekend 2012



The artists of Project Workshops are busily planning their next 'home' exhibition, scheduled for the weekend 12th and 13th May 2012:

Metal sculptor Marek Woznica is working on a full size rose arbour festooned with pewter blooms, and Vivi's massive bronze sculpture of footballer Arthur Wharton should be completed ready for its journey to Wembley in time for the Olympic Games. Other work in the Foundry includes a winged *Icarus* by Nicola Godden also intended for the Olympics, and a tribute to super-horse *Kauto Star* by Willy Newton, destined for Haydock Park.



'Original Sin' by Richard Atkinson-Willes

Don't miss a rare opportunity to see the exhibition of sculpture **Icons and Other Images** by Richard Atkinson-Willes and Alexander Brewood - a fascinating comment on British Art of the 20th Century by these two St Martins trained sculptors, using a wide range of colours and materials to tell its story.

Our open weekends are a chance to mingle with the best artists and craftsmen in the area. It's a great day out for all the family and entry is absolutely free!!!!

Christmas Sale 2011

Project Workshops welcomed a record number of visitors to its popular Christmas Shopping Weekend in December and handed out a record breaking 600 mince pies to get them in a festive mood! The most frequent comment was "We never realised there would be so much to see" and most visitors stayed longer than expected and rewarded the resident artists with record sales.

As always Mark and David's workshop provided a welcome haven to warm up as well as marvel at the glassmaking demonstrations. Once again they showed their versatility by exhibiting reproduction Georgian glass alongside classical style vessels similar to ones they made specially for Grayson



'Tomb of the Unknown Craftsman' (detail) by Grayson Perry

Perry's groundbreaking show **Tomb of the Unknown Craftsman** at the British Museum - a rare meeting of craftsmanship and the elite world of contemporary fine art.

Vivi Mallock - Sculptor

Vivi has a busy year ahead - with seven commissions in the studio or in the pipeline. These include a bronze statue of



'Nina' by Vivi Mallock

Elgar in Hampstead, a memorial in Central London to those killed in the Korean War, a memorial for the Army Air Corps, a bronze portrait bust of the late Lt Gen Sir Michael Gray, and the giant bronze of footballer Arthur Wharton for installation at Wembley in time for the Olympics.

Her most pressing commission at present is a larger-than-life-size bronze bust of Winston Churchill, which is due to be installed in the Pentagon in June.



Tim Chadsey - Furniture Maker

Tim's aim is to make furniture that emphasises individuality of style, quality of craftsmanship, beauty of materials and design that will please for generations to come.

He has recently learned that he will shortly be receiving some 1869 teak timber from the Cutty Sark, the world's last surviving tea clipper, with which he will make some tea caddies, to be sold in the Cutty Sark Visitor Shop in Greenwich.

At the moment Tim is making a console table and a pair of Bookcases with cupboards for a client in Greenwich, and this will be followed by a series of tables made from Walnut and Ash from the client's farm - a case of the client growing their own tables!

Tanya Dalley - Artist

Tanya is an artist, art tutor, meditation teacher and facilitator of inquiry. She studied Fine Art at Chelsea and Goldsmiths, and joined the Project Workshops collective in 2011. Her art courses are typically fun and inspiring, and offer the opportunity to delve deep within oneself. There are single-day courses, one-to-one tuition hours, and longer workshops.

Tanya has many years of Meditation and Inquiry training and experience, working individually with both adults and children, and together with couples, families, work colleagues and other groups.



Amy Goodman - Sculptor and Portrait Artist

Amy is an established sculptor and portrait artist specialising in her unique style of welded steel sculpture as well as bronze sculpture and a variety of two-dimensional work.

Amy is currently working on private commissions and sculpture workshops, and also holds life drawings classes here in the Life Studio at Project Workshops.

Her classes are: *Life Drawing for Beginners - Drawing and Painting the Canine and/or Equine - Sculpture Workshops*. All are available as evening classes, with Sculpture also as a two day workshop

Robyn Golden-Hann - Letter Cutter

Robyn is a traditionally trained stone-mason. The majority of her commissions are for bespoke memorials hand carved in stone and slate. Recent works including a pastiche Roman military style headstone and two commissions for Portsmouth cathedral: a plaque to the late Bishop Stevenson which was dedicated by Archbishop Rowan Williams in June 2011, and a new plaque commemorating boy sailors killed in World War 2, which will be dedicated during a special service in March 2012



Geoff Hague - Knifemaker

Geoff uses his design ability and attention to detail to produce high quality functional and aesthetically pleasing cutting tools for the discerning user and collector alike.

The early part of 2012 finds Geoff working on commissions, one of which is a matching set of four folding knives which will be sent to Italy to be engraved, and he is already designing new patterns for the shows that he will attend during this year.

New developments in these pieces will see the combination of the old whaler's art of scrimshaw in a way he has not used before, with patinated silver for dramatic effect in ever more unique and collectable pieces.

Mark Taylor and David Hill - Georgian Glassmakers

After over twenty years working on reproducing Roman glass, Mark and David have now completed their transition to producing Eighteenth-century English drinking vessels, to the same high standards of workmanship and authenticity as always, but now in colourless lead crystal glass.

They are the only glassmakers in the UK to specialise in a comprehensive range of accurately-observed and re-created Georgian glasses, and their work has been enthusiastically embraced by all who enjoy the special pleasure of drinking from these extremely tactile, elegant vessels. They offer glassblowing lessons for one or two individuals at beginner level, and glassblowing demonstrations for groups of up to 30 people.



Peter Jaques - Artist

Peter continues to paint portraits, landscapes and still life in both oil and watercolour, with Venice and Cornwall, as well as local subjects inspire his production of landscapes.

He demonstrates oil painting techniques to art groups across the South, with a display of some of his recent paintings as examples. He also workshops with Southern art groups and students, of up to twenty at a time, advising and assisting with colour, composition and drawing, and teaches these subjects to students of all abilities at his Project Workshop studio. He welcomes commissions of all types - subjects have included animals, people, yachts, cars, and houses.



Jennie Gilbert - Potter

Jennie specialises in producing a distinctive range of tableware in reduction-fired stoneware. Her speciality is her distinctive *Mishima* Range which she has developed to include a new range inspired by fish motifs from Pompeii. Mishima is the inlaying of a contrasting coloured clay slip into a pattern that has been impressed, stamped, or carved into the clay. Her work ranges from espresso and latte mugs to storage jars, plates and lamp bases.

Jennie offers pottery lessons: one-to-one tuition, or for small groups (with a maximum of four participants), where pupils can learn how to throw on the wheel or use other handbuilding techniques.

Marek Woznica - Metal Worker

Marek started out as a metalworker at a very early age in his father's workshop - a successful jewellery designer and pattern maker in London. He models his own patterns directly in pewter, and casts from his own moulds, which he makes on the premises. Marek also trained as an engineer, and now combines turned woods with his pewter metalwork to create exquisite goblets, trinket boxes and ornamental pieces, along with his accomplished animal jewellery designs.



Soraya French - Artist

Soraya is a freelance artist, tutor and author. She is a figurative painter, and most of her subjects are of transient moments, people going about their everyday life. Light and Colour are the two prominent features of her work.

2011 was an amazing year for Soraya. She has had many successful workshops held at the studio with students travelling far and wide to attend these hands-on sessions, and both May and December Open Studio Weekends were extremely successful.

She continues to combine teaching and exhibiting at various Art Fairs and galleries in London and other venues around the UK. All Soraya's workshops before April are currently fully subscribed, but there is a waiting list.

Elaine Peto - Ceramicist

Elaine's subjects range from farm beasts to exotic wild animals, as well as imaginary and mythological creatures such as Minotaurs and Centaurs.

At present she is working on ideas and pieces for an exhibition at Imagine Gallery titled *Grimm Brothers' Fairy Tales*. This will be a joint exhibition with Emma Rodgers, and they plan to work on some pieces together.



Elizabeth Hodgson - Sculptor and Photographer

Liz specialises in creating unique sculptural pieces, mainly in copper and steel. Some of her latest work involves fusing and slumping glass. She has built up a career as a community artist, working in local arts with a wide cross-section of people involved in life-long learning projects.

Liz offers studio workshops for all ages, but with a particular aim to enable young people in the local rural area to gain the Arts Award (certified by the Arts Council) in her capacity as Arts Award Advisor.



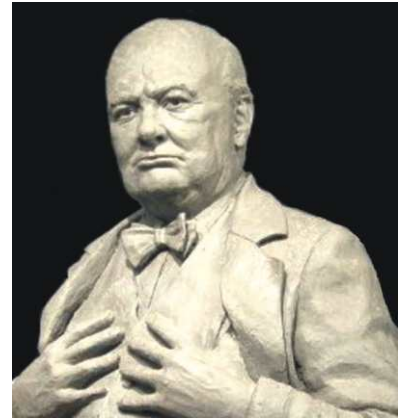
Talos Art Foundry - Bronze Foundry

The Talos Foundry continues to thrive, and is now casting for a number of new artists.

Business has almost doubled since April 2010 when the foundry moved into its new premises at Project Workshops, and our reputation for quality and reliability continues to grow.

In January, the Talos team was joined by Patrick Bull as trainee in the chasing shop to help us keep up with demand. With last year's big projects now completed, we are looking forward to casting the body of work for our regular artists, including three beautiful new pieces by Dorset sculptor Andrew Thomas, and Gill Parker's elegant group of *Mares and Foals*.

Larger projects for 2012 include Vivi Mallock's bust of Churchill for the Pentagon, and her life-size figure of Elgar. Work for the London Olympics includes a 9 ft winged figure of *Icarus* by Nicola Godden.



Winston Churchill by Vivi Mallock

life studio at Project Workshops



2011 was another exciting year for the Life Studio; we introduced more workshops which have been well attended and thoroughly enjoyed by all.

Our Yoga and Pilates classes are increasing in numbers, and the warm studio is a joy to stretch out

in, especially when the weather is freezing outside!

2012 sees the introduction of some new workshops including **Make a Willow Platter with Judith Needham** on the 17th *four*

March, **Anodised Aluminium: Intensive Colour with Lindsey Mann** on the 5th and 6th May, and **Colourful Aluminium Jewellery with Lindsey Mann** on the 16th and 17th June.

For a full list of events, and to hire this beautiful studio, please see www.project-workshop.co.uk



Kim Vines - Artist



Kim is a talented painter who divides her time between commissioned portraits of both people and animals, and still-life and landscapes.

She also teaches, with particular emphasis on working with identified pupils of talent in the state sector. Kim has great plans to build her own studio at home this year.

'Molly' by Kim Vines

For further information all artists can be contacted through the Project Workshops website, and studios are open to visitors by arrangement.

Open Studios Weekend 12th - 13th May 2012
Christmas Sale Weekend 8th - 9th December 2012

Resident Artists Exhibitions 2012

Elaine Peto

14th April: *Grimm Brothers' Fairy Tales*, Imagine Gallery, Sudbury, Suffolk
8th July: 23rd August - *Fauna Britannica*, Galerie du Don, Le Don du Fel, France

Geoff Hague

24th June: Tortworth Court Four Pillars Hotel, Tortworth, South Gloucestershire
15th - 17th June: *The Contemporary Craft Festival*, Mill Marsh Park, Bovey Tracey, Devon
19th - 22nd July: *Art in Action*, Waterperry House, Waterperry, Oxfordshire

Jennie Gilbert

1st - 3rd June: *Potfest Scotland*, Scone Castle, Perth, Scotland
6th - 8th July: *Art In Clay*, Hatfield House, Hatfield, Hertfordshire
19th - 22nd July: *Art in Action*, Waterperry House, Waterperry, Oxfordshire
27th - 29th July: *Potfest In The Park*, Hutton in the Forest, Penrith, Cumbria

Tim Chadsey

15th-17th June: *The Contemporary Craft Festival*, Mill Marsh Park, Bovey Tracey, Devon
16th - 18th November: *Handmade In Britain*, Chelsea Old Town Hall, London

Soraya French

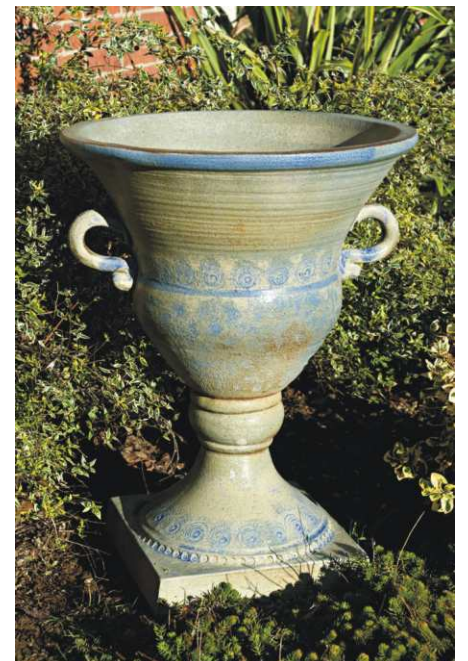
15th - 18th March: *The Affordable Art Fair*, Battersea
5th - 14th July: *Society of Women Artists Annual Exhibition*, Mall Galleries, London

Amy Goodman

5th May - 10th June: Exhibition at Avebury Manor, Wiltshire (Private View on 4th May)
11th - 27th May: *Artspace 2012* at The Barn Galleries, Henley Upon Thames

Mark Taylor and David Hill

6th May: *The National Glass Fair* at The National Motorcycle Museum, Solihull
23rd September: *The Cambridge Glass Fair* at Chilford Hall, Linton, Cambridge
11th November: *The National Glass Fair* at The National Motorcycle Museum, Solihull



Stoneware Urn by MandyAtkinson-Willes